



SUMMERVILLE Presbyterian Church

Share Christ, Serve Others, Grow Together in Faith



VISITOR'S GUIDE



407 S. Laurel St.
Summerville, SC 29483
www.summervillepres.org
info@summervillepres.org
843-871-0280

WELCOME!

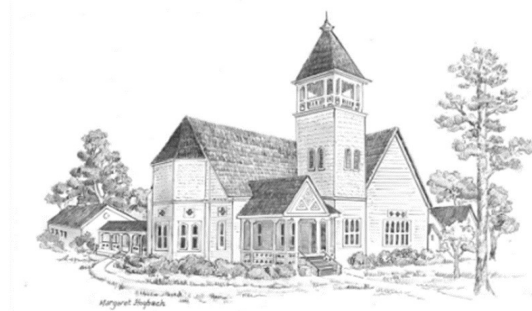
Our Mission

Share Christ, Serve Others, Grow Together in Faith

Ministry Teams

Summerville Presbyterian Church (SPC) has eight ministry teams meeting monthly that invite anyone interested to join:

- **Worship**—Provides worship opportunities for the entire congregation and community each Sunday, as well as special services through the year associated with the liturgical calendar.
- **Spiritual Growth**—Provides opportunities, resources, and fosters relationships to study and develop skills which will enable every member to grow in their relationship to God and, thus, demonstrate to others God's love in the world.
- **Fellowship**—Ministers to the congregation by helping them develop a sense of community and grow into a deeper fellowship together.
- **Service**—Serves as instructed by Jesus, to go into the world and carry on the Lord's work by serving God's people everywhere. The Service Ministry Team provides donations and volunteers to support various mission programs at the local, regional, and global levels.
- **Nurture**—Supports multiple ministries designed to respond to individuals' spiritual, emotional and physical needs during difficult times such as illnesses, surgeries, grieving the loss of a loved one or isolation.
- **Finance**—Supporting the ongoing work of the church through responsible financial management.
- **Property**—Supports the activities of the church and community by maintaining and planning for SPC's facilities.



In 1695, the people of Dorchester, Massachusetts, sent the Rev. Joseph Lord and several followers “to go to Carolina and settle the gospel there.” A site, eighteen miles from Charleston, was chosen and named Dorchester, and The Independent White Church was established. The church became known as the Old White Meeting House. A wood church was built first, followed by the construction of a brick building whose remnants can still be seen.

Throughout the Revolutionary War, the British occupied and then burned the interior of the church building. The walls were all that remained.

The interior was rebuilt and worship resumed there in 1794. Soon thereafter there was interest in a Summer Church, and construction began in 1831. On June 9, 1859, the Charleston Presbytery chartered Summerville Presbyterian Church.

By 1886, all that remained of the Old White Meeting House were its exterior walls. By 1894, the 1831 building was in disrepair and the 66 members undertook the formidable task of building our present sanctuary, dedicated in 1895.

Through several building projects during the 20th century, the Wheeler Building, the Spann Music Building, the education building, the gym, kitchen and additional classrooms were constructed.

The most recent renovation of the sanctuary was completed in the spring of 2021. We give thanks for the generous gifts that made possible this restoration.

May we continue to use this sanctuary and all our spaces to proclaim the good news of the gospel of Jesus Christ!

Membership

You may join SPC by transfer of letter (usually for those coming from another Presbyterian church), by reaffirmation of faith in Jesus Christ as Savior and Lord, or by profession of faith and baptism. Three times a year we offer a two-part Inquirers' class, which will introduce participants to what it means to be a Presbyterian, give an overview of our ministries and an opportunity to share your faith story with the elders.

WORSHIP & MUSIC

Worship Schedule

8:45 and 11:00 am – Traditional Services

Liturgical service that includes the Chancel Choir at 11:00 and rotating musical elements at both services including soloists, Jewel Tones, and Handbells. Services are held in the sanctuary.

10:00 am – Contemporary Service

Informal service that includes contemporary music and opportunities for the congregation to share prayer requests. Services are held in the gym.

Both services are livestreamed, and are available on SPC's website, YouTube Channel and Facebook page.

Sacraments

Baptism

Baptism is God's gift of grace, and in our Presbyterian tradition, is administered only once, signifying the beginning of life in Christ. We understand it to be a sign of the covenant; therefore, infants as well as adults may receive the sacrament of baptism. The baptism of children witnesses to the truth that God's love claims people before they are able to respond in faith. Ordinarily, membership is required for parents wishing to have their children baptized so the congregation can faithfully fulfil their vows of support to the family. Contact Pastor Anita to learn more.

Communion

Communion is also a means of grace, an opportunity to be nurtured in our faith by Christ who is the host of the table. Communion is offered the first Sunday of every month, and all are welcome to partake of the sacrament.



Music Ministry

Chancel Choir

For anyone from junior high school through adults, this choir sings traditional anthems most Sundays and at special services including the Christmas Cantata and Lenten Tenebrae Service. Rehearsals are on Wednesday evenings at 6:30 pm in the Choir room. (7:30 pm during Wednesday Night Live)

Bell Choir

Members work as a single unit of music that transcends the mechanics and "speaks" to the listener. The Bell Choir meets Tuesdays at 5:00 pm. Ringing bells requires the ability to know right from left and count up to 6, and enjoy cooperating as a team.

Children's Choir

For K-6th grade. Children's Choir rehearses seasonally on Sunday afternoons, in preparation for the annual Christmas pageant and other special occasions. Additionally, all children invited to the Music and Drama Camp held at the end of July each summer.

Jewel Tones

Our adult treble women's ensemble meets weekly for one hour and generally sings about once a month. They also sing for the Maundy Thursday service and for Christmas Eve.

Occasionally they also perform for community concerts and performances.

Praise Team

The Praise Team provides music for the contemporary service and welcomes vocalists as well as instrumentalists on instruments such as acoustic, electric or bass guitars, keyboards, and drums. Rehearsals are Wednesdays at 6:30 pm.

ADULT MINISTRIES

Sunday School – Sunday Mornings, 10:00 am

Genesis - This class studies an array of subjects throughout the year. This class is discussion-based, relying on the insight and knowledge of its members to supplement the materials prepared. (Room 101)

Seekers - The Seekers are a large class, diverse in age, knowledge of the Bible and especially opinions! They study challenging curriculum as they seek to grow in faith . (Room 201 next to Lanneau Hall)

“Under the Hill” - This class engages in biblical and topical studies, with opportunities for fellowship outside of class! (Room 106)

Wednesday Night Live Classes

Each fall and winter/spring, we offer a semester of classes that follow a fellowship dinner and game time. Class topics vary, with an emphasis on Bible study and growth in spiritual disciplines.

Small Groups

SPC has a variety of small groups, including a knitting/crocheting group, women’s group, and Sunday morning sermon-based small group that follows the contemporary service.

FELLOWSHIP



Spring Cookout – This annual event is usually held on a Sunday on the church grounds or a local park.

Lemonade on the Lawn – Spring gathering on the lawn on a Sunday morning.

Pig Pickin’ – SPC hosts an annual pig pickin’ in the winter which is a great opportunity for fellowship and outreach.

Prime Timers – Monthly activity for seniors, usually the third Thursday. Activities include fellowship luncheons and presentations in Lanneau Hall, lunches at local restaurants, and field trips.

Salt Shakers – Monthly rotating group dinners at local restaurants. Two-three potlucks at the church kick off each semester and indicate who is interested in being assigned a group

Wednesday Night Dinners & Games – Usually two semesters a year, this is a great opportunity to enjoy a catered dinner and fun ice-breakers and games such as Bingo, Bible Trivia, Name That Tune and Card Sharks.



Women’s Ministry

Circles – SPC has two Presbyterian Women’s circles, the Miriam and Lydia Circle, which during the academic year meet on the second Tuesday of every month.

Other activities include an annual PW Birthday luncheon and missions such as the Blanket Offering sponsored by Church World Service.



Men’s Ministry

Wednesday Morning Bible Study – 6:30-7:15 am on Zoom. This group uses short Bible studies that are four-six weeks in length.

Saturday Morning Men’s Group – Saturday 8:30-9:30 am in the Genesis Classroom. This group works through various books of the Bible and includes opportunities for fellowship.

CHILDREN & YOUTH MINISTRIES



Nursery—Nursery for infants through age 4 is available during Sunday School, worship, and special events.

Sunday School (K-5th Grade) - Using a different Bible story each week, children learn about the Christian faith, the love of God, and the life, death and resurrection of Jesus Christ.

Joy Kids – Joy Kids is offered two semesters of the year in the fall and winter/spring. The semesters are usually 5-6 weeks in length, and occur on Sunday nights from 4:00-5:30 pm. Joy Kids emphasizes activities, fellowship and fun.

Vacation Bible School – Each summer, VBS is offered for a week, featuring a Bible story, crafts, games, music, and fun! This is a great way to learn about Jesus through stories in the Bible.

Easter Egg Hunt – This event is designed for parents and children, creatively presenting the message of Easter and of course, offering the HUNT!

Trunk or Treat/Fall Festival – This event invites church families and members to decorate trunks and provide candy for the kids from the community who visit our campus on this day. Additional activities are planned during this time as well.

Advent/Christmas—Each year we offer some type of Advent activity or Christmas-themed event for children to participate in, along with their parents. We also offer a child-friendly family service on Christmas Eve.



Youth Sunday Night Program—Meets most Sunday night during the academic year (aside from holidays and breaks), from 4:30-6:00 pm. Each meeting includes fellowship time, discussion-based devotion, games and varying activities, including field trips and off campus events. The goal of this program is to create an environment that invites the kids to ask questions and talk about their faith-walk with Christ.

Youth Trips and Missions—Trips have included opportunities for middle and high school youth to attend retreats at Montreat Conference Center in the summer and Bethelwoods in the fall and winter.

Youth Fundraisers- The youth do a variety of fundraisers throughout the year that help support programs and registration fees for camps, conferences and mission trips. One of those fundraisers is the **Chili Cookoff**, which is usually the first of December and is paired with the children's Christmas pageant. The chili is provided by those entering the contest, with the youth serving as hosts for the event.



SERVICE



The Angel Tree at SPC provides goods and supplies to the needy at Christmas-time through several different organizations such as: Home of Hope, Hope's House, Habitat for Humanity, Hands of Christ, and Thornwell Home for Children.

Blessing Bags—SPC puts together backpacks with simple items of food, water and hygiene that are available to the homeless men and women who stop by our church office.



HELP of Summerville provides assistance to residents of Dorchester County in emergency situations, providing clothing, funds for utilities, rent, and medicine. A list of needed items is sent out in SPC's weekly eblasts.



Meals on Wheels of Summerville provides home delivered nutritious mid-day meal service for the elderly or others who are homebound, isolated, or incapacitated. Drivers are always needed. www.mowsummerville.org



Rise Against Hunger is a meal packaging event that uses local volunteers to make an impact on hunger by building resilience, self-

sufficiency and empowerment in communities worldwide. riseagainsthunger.org

Presbyterian Offerings that are collected by SPC annually include One Great Hour of Sharing, Peace and Global Witness, and the Christmas Joy Offering.

Sunday Dinners in the Park are provided by volunteers who assist in providing "Sunday Dinners" in Doty Park to feed the less fortunate.



The **Thanksgiving Basket** mission consists of five Summerville area churches that join together to provide Thanksgiving meals to approximately 300-400 families in the Dorchester County area on the Saturday before Thanksgiving.



Water Mission provides safe water to those in developing countries and disaster areas. In addition to our financial support, SPC members have participated in the Walk for Water (an annual event to raise awareness) and have donated time to build water units. www.watermission.org



Campus Ministry - SPC supports the Charleston Atlantic Presbytery's campus ministry which has ministries at the College of Charleston and the Citadel.



Dorchester County Community Outreach is the organization that supports the men's and women's shelters in Summerville, Home of Hope and Hope's House, respectively. SPC collects donations for both homes. Dcco4homeless.com



Hands of Christ meets the basic needs of children as they begin each school year, showing them Christ's love by providing clothing and school supplies. SPC collects items for Hands of Christ throughout the year and distributes items in August before the beginning of school. www.handsofchrist.net/



Hearts for Summerville is a local non-profit organization that seeks to support the needs of youth in our community. SPC donates funds and hosts

events to help support this organization. Heartsforsummerville.com

NURTURE

Nurture Ministry Team (*ongoing communication, support and nurturing*) – provides coordinated response among pastoral staff, deacons and the NMT to nurture the members of SPC through implementation and oversight of multiple initiatives at varying levels of care. Included under the Nurture Ministry Team Umbrella are:

Assimilation of new members into the life of SPC:

Inquirer's class; New Member Shepherds,
New Member Dinners

Prayer and care ministries: card ministry, CareNotes, Confirmand and Graduate Recognition, Prayer Shawl ministry, Prayer Covenant and bi-monthly Prayer Gatherings

Deacons (*ongoing communication, support and nurturing*) – as outlined in the Book of Order, deacons are ordained servants who provide ongoing "compassion, witness, and service" to the congregation, particularly "anyone in distress." They are elected to serve a "flock" over a period of three years.

Congregational Care Committee (*immediate, short-term, one-on-one support*) – provides care for members experiencing grief, health issues, spiritual crisis and other personal or family life struggles. Generally, care is delivered within the first month of need and includes calls, cards, flowers, delivery of prayer shawls, meals and memorial receptions.



GriefShare (*intermediate group support*) – GriefShare is a support group for people who have lost a spouse, child, family member, or friend and are in need of ongoing care. Groups meet weekly for 13 weeks to help participants face these challenges and move toward rebuilding their lives.



DivorceCare (*intermediate group support*) – DivorceCare is a biblical, Christ-centered divorce support group ministry. Provided resources help equip a lay-led team for effective and ongoing divorce ministry. Similar in format to GriefShare, groups meet weekly for 13 weeks. Each session includes a video seminar, support group discussion and personal study and reflection. Groups are open to both church and community members.



Christ caring for people through people

**STEPHEN
MINISTRY**

Stephen Ministry (*long-term, one-on-one support*) – Stephen Ministry provides high-quality, Christ-centered care to people in the congregation and the community experiencing life difficulties. It is appropriate for people experiencing a difficult time in life, such as grief, divorce, job loss, chronic or terminal illness, or relocation. Stephen Ministers receive 50 hours of training to prepare them for providing one-to-one care. They commit to working with a care receiver once a week for up to a year or more and often provide care for people in the broader community.

SPC STAFF

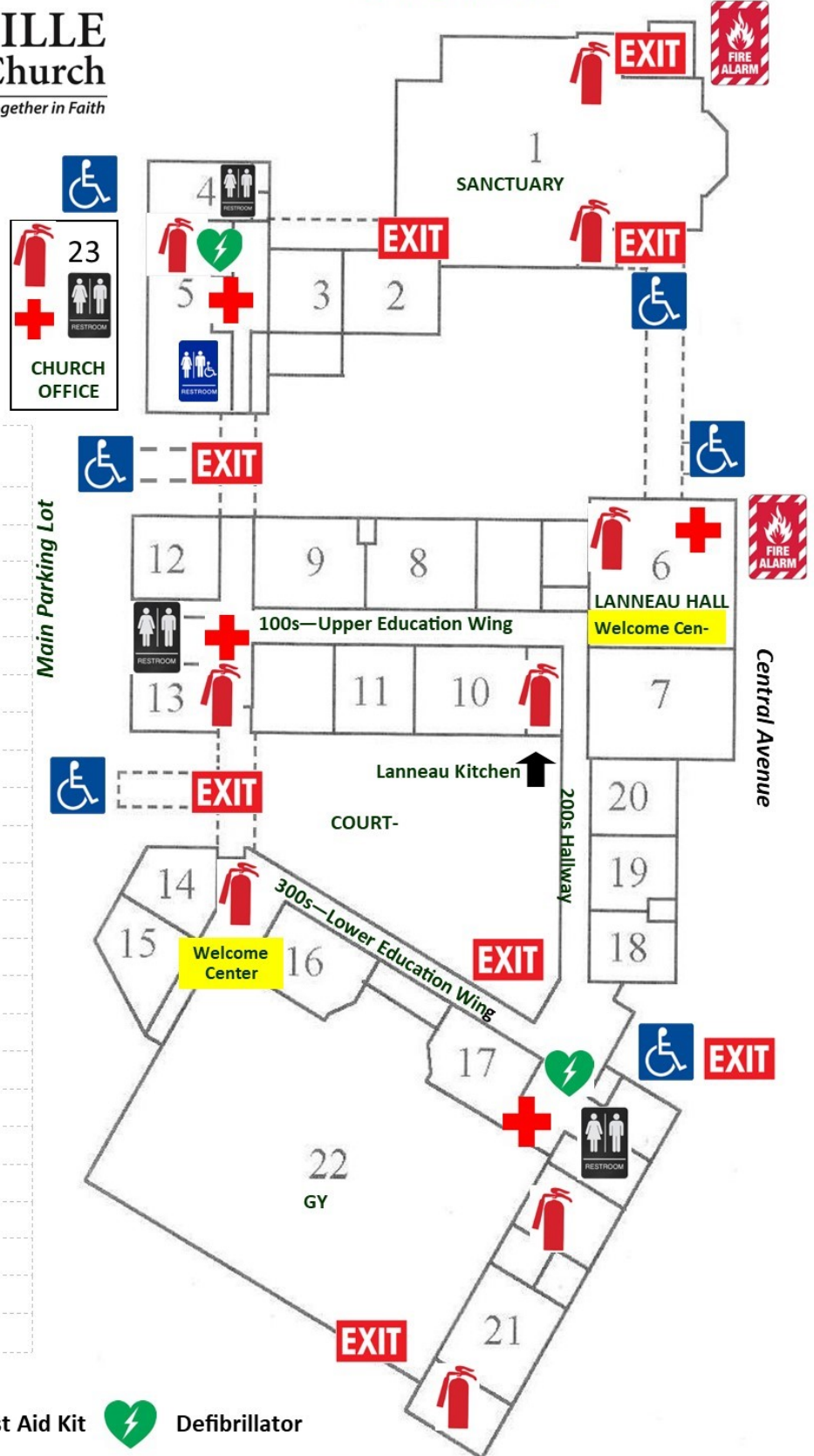
Rev. Dr. Anita Herbert—Senior Pastor
Rev. Dr. Ralph Herbert—Discipleship Pastor
Jennifer Grainger—Director of Spiritual Growth & Outreach
William Bennett—Director of Music
Jim Moore—Organist
Joe Swisher & Julia Miller—Co-Directors of Contemporary Worship
Allison Bond—Director of Youth & College Ministries
Julie McCormick—Administrative Office & Communications Coordinator
Cecelia Bond—Finance Manager
Shirley Gay—Sexton
Bob Hirsch—Sexton



SUMMERVILLE Presbyterian Church

Share Christ, Serve Others, Grow Together in Faith

South Laurel Street



LEGEND

- | | |
|----|--------------------------|
| 1 | Sanctuary |
| 2 | Dorchester Room |
| 3 | Handbell Room |
| 4 | Anderson Library |
| 5 | Choir Room |
| 6 | 200—Lanneau Hall |
| 7 | 201—Adult Classroom |
| 8 | 102—Children’s Classroom |
| 9 | 104—Children’s Classroom |
| 10 | 101—Adult Classroom |
| 11 | 103—Adult Classroom |
| 12 | 107—Adult Classroom |
| 13 | 106—Adult Classroom |
| 14 | 305—Adult Classroom |
| 15 | 304—Adult Classroom |
| 16 | 303—Middle School |
| 17 | 301—High School |
| 18 | 205—Children’s Room |
| 19 | 204—Nursery |
| 20 | 203—Toddler Room |
| 21 | Kitchen |
| 22 | Gym |
| 23 | Church Office |



Fire Extinguisher



First Aid Kit



Defibrillator

407 South Laurel Street, Summerville, SC 29483